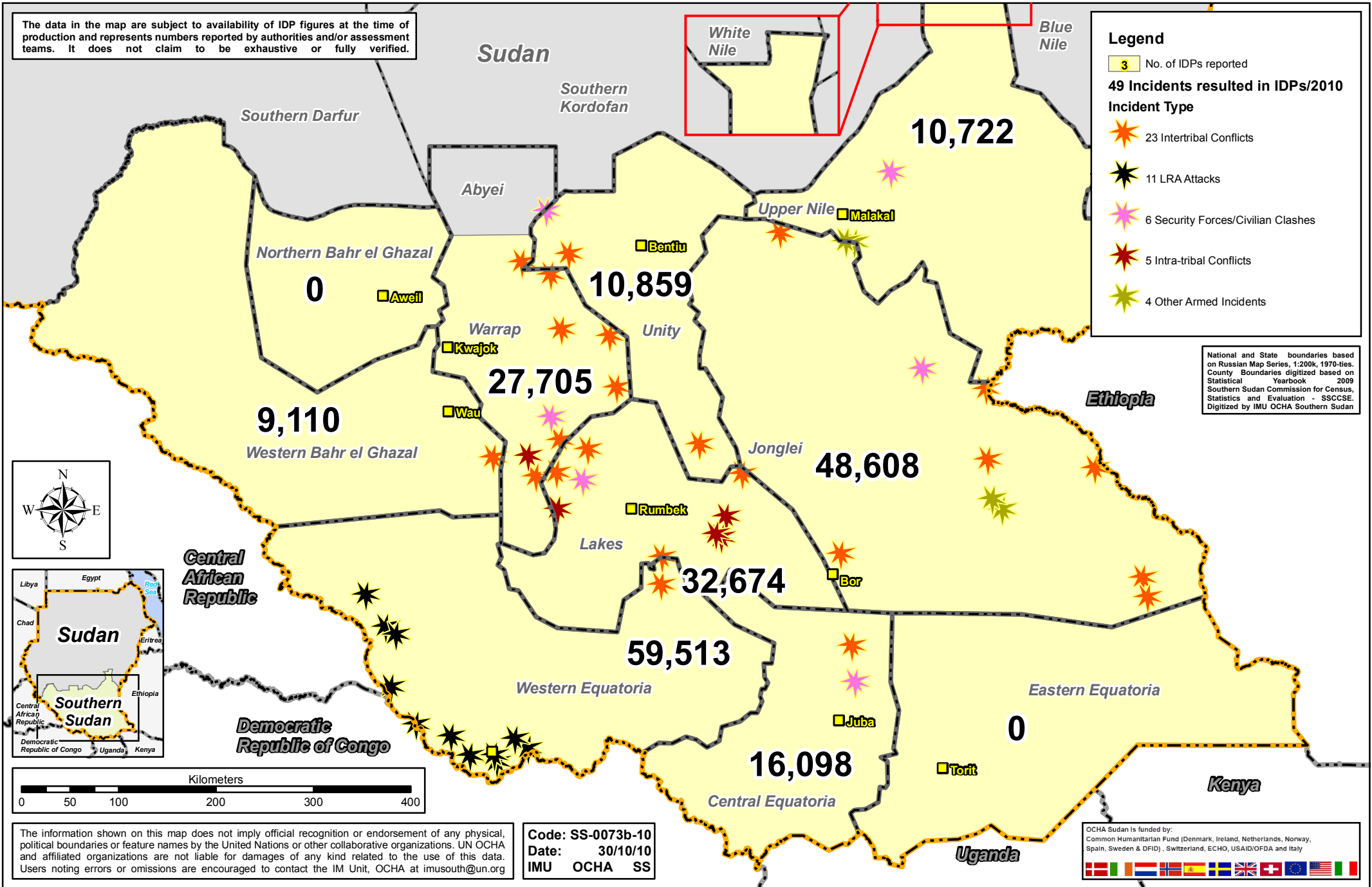


The data in the map are subject to availability of IDP figures at the time of production and represents numbers reported by authorities and/or assessment teams. It does not claim to be exhaustive or fully verified.



Legend

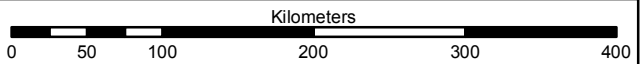
3 No. of IDPs reported

49 Incidents resulted in IDPs/2010

Incident Type

- 23 Intertribal Conflicts
- 11 LRA Attacks
- 6 Security Forces/Civilian Clashes
- 5 Intra-tribal Conflicts
- 4 Other Armed Incidents

National and State boundaries based on Russian Map Series, 1:200k, 1970-ties. County boundaries digitized based on Statistical Yearbook 2009 Southern Sudan Commission for Census, Statistics and Evaluation - SSCSE. Digitized by IMU OCHA Southern Sudan



The information shown on this map does not imply official recognition or endorsement of any physical, political boundaries or feature names by the United Nations or other collaborative organizations. UN OCHA and affiliated organizations are not liable for damages of any kind related to the use of this data. Users noting errors or omissions are encouraged to contact the IM Unit, OCHA at imusouth@un.org

Code: SS-0073b-10
 Date: 30/10/10
 IMU OCHA SS

