

KEY FIGURES

101,308

New Burundian refugees in the neighbouring countries since the beginning of April 2015 (as at 9 June)

25,343

Refugees in Mahama camp in Rwanda (9 June)

53,183

Refugees in Nyarugusu camp in Tanzania (8 June)

1,252

Refugees in Lusenda regrouping site in the DRC (7 June)

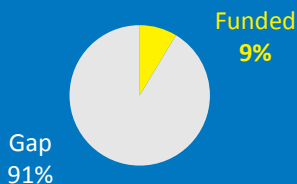
2,182

Refugees in the reception centre of Nakivale settlement (5 June)

FUNDING

USD 152 million

requested for the situation



PRIORITIES

- Relocation of refugees to safety away from border areas.
- Preparation of refugee sites allocated by governments of host countries.
- Life-saving multi-sector emergency protection and assistance interventions.
- Prepositioning of relief items for anticipated influxes to neighbouring countries.

BURUNDI SITUATION

UNHCR REGIONAL UPDATE 5

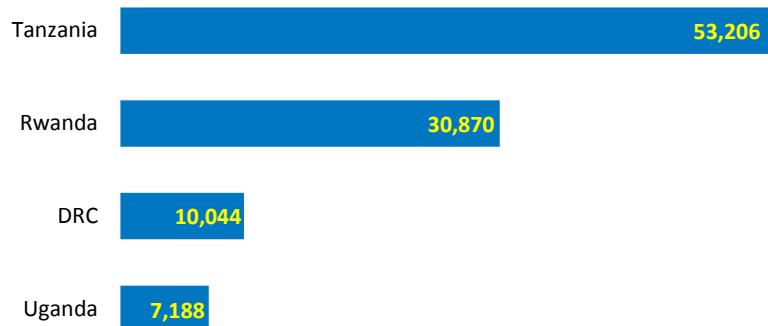
9 June 2015

HIGHLIGHTS

- On 8 June, Burundi's Electoral Commission (CENI) proposed possible dates for the upcoming elections – 15 July for presidential elections (originally scheduled for 26 June) and 29 June for parliamentary elections. Burundi's President Pierre Nkurunziza issued a decree on 10 June confirming the dates.
- On 9 June, the UN High Commissioner for Human Rights, Zeid Ra'ad Al Hussein, said he was "alarmed" by accounts from refugees fleeing Burundi about violence and threats against civilians by militia groups which risked tipping the country "over the edge" into conflict. Many refugees have reported facing threats from militia groups during the pre-election period which have led to their displacement.
- Over 101,000 Burundian refugees and asylum-seekers have arrived in the neighbouring countries of the Democratic Republic of the Congo (DRC), the United Republic of Tanzania, Rwanda and Uganda due to pre-election violence and intimidation.

Population of concern

A total of **101,308** people of concern



RECENT DEVELOPMENTS

Operational Context

- Save the Children (SC) has reported that in the last six weeks, more than 2,300 children who fled Burundi to the neighbouring countries have been separated from their families. SC added that children as young as six are being sent by their parents, who remain behind to protect their homes and possessions from looters. Nearly 60% of all newly arrived refugees in Rwanda are children.
- On 8 June UNHCR Rwanda and the Ministry of Disaster Management and Refugee Affairs (MIDIMAR), along with ONE UN sister agencies and NGOs, briefed members of the donor and diplomatic community on the interagency appeal – the Burundi Regional Refugee Response Plan – to protect and assist Burundian refugees in the country. Participating agencies in the plan are appealing for funding to cover the response until September 2015, after which planning needs will be revised.

Protection

Achievements and Impact & Identified Needs and Remaining Gaps

DEMOCRATIC REPUBLIC OF THE CONGO

- The number of new arrivals has reached 10,044 (8 June), with 78% located in Uvira territory and 22% in Fizi territory and with over half the population originating from Cibitoke province. A total of 9,802 have been registered biometrically by UNHCR and the Government's National Commission for Refugees (CNR). The majority, 8,146 people, are being hosted by Burundian refugee families in South Kivu. As of 8 June, 1,252 Burundian refugees had been relocated to Lusenda regrouping site.



A boat is seen landing on the DRC coast in Mboko on 12 May. UNHCR/F.Scoppa

RWANDA

- The number of new arrivals has reached 30,870 (9 June) with the majority, 25,343, relocated to Mahama camp. The arrival rate has decreased with 250 arriving per day in the past week. It is important to note that an undetermined number of urban refugees are yet to be registered. The majority of new arrivals are coming from Bujumbura. They report fewer road blocks and that public transportation is more accessible.
- Relocation from reception centres to Mahama camp has resumed. Mahama can currently accommodate an additional 1,800 refugees; this coming week, 1,500 from Bugesera and 300 Nyanza will be relocated. Another 50 hectares of land has been provided by the Government.

UGANDA

- The number of new arrivals has reached 7,188 (5 June) including 2,182 currently in the reception centre in Nakivale settlement. The Government of Uganda has now made a decision to recognise Burundian refugees on a *prima facie* basis.

UNITED REPUBLIC OF TANZANIA

- Over 53,000 Burundian refugees have arrived in Tanzania. The majority of this population have arrived through Kagunga a fishing village along the shores of Lake Tanganyika. More recently however, a shift is noted towards arrivals from points further north. An average of 200 refugees continue to arrive from Burundi on a daily basis.

- Nyarugusu camp is close to full capacity and there is a need to identify a new location to accommodate additional refugees.

Education

Achievements and Impact & Identified Needs and Remaining Gaps

TANZANIA

- Some 15,000 children are to be registered for school in May-July and 25,000 school-aged children are planned to be enrolled by end of September should the influx continue.
- Among the 88 teachers required, UNICEF is able to fund 44; an appeal for further funding has been made. Education tents have been procured for 40 out of the 60 schools required in Nyarugusu.
- Five sites identified for temporary learning spaces/school have been cleared. The International Rescue Committee (IRC) is to procure locally made benches to place inside temporary school tents. Gaps identified include desks and cupboards for school books and school equipment for students.



Health

Achievements and Impact & Identified Needs and Remaining Gaps

DEMOCRATIC REPUBLIC OF THE CONGO

- Patients are received on a daily basis for consultation at the transit centres of Kavimvira and Mongemonge and the regrouping sites of Sange and Lusenda. Serious cases are referred to a general hospital close to the sites. The most recorded illnesses are malaria, intestinal parasitosis and respiratory infections. Assistance and hot meals are provided for refugees at the hospital. Vehicles are available day and night at the centres to take patients to the hospital.

RWANDA

- A total of 1,399 refugee patients were treated at Mahama health centre during the reporting period with an average of 50 patients per clinician per day.
- Respiratory tract illnesses represent the majority of mortalities in Mahama camp and are responsible for 31% of total consultations followed by watery diarrhea (12%) and malaria (10%).

UNITED REPUBLIC OF TANZANIA

- Following an outbreak of cholera on 18 May, the situation has now stabilized with no new cases of cholera reported since 4 June. A newly-established Cholera Treatment Center (CTC) in Nyarugusu, with a capacity of 150-200 beds, has started receiving patients.
- There is a noted increase in cases of malaria; health partners are working to address the issue; distribution of mosquito nets started in Nyarugusu.



A young girl from Burundi holds her younger brother in Mahama refugee camp, Rwanda. UNHCR/K.Holt



Food Security and Nutrition

Achievements and Impact & Identified Needs and Remaining Gaps

DEMOCRATIC REPUBLIC OF THE CONGO

- This reporting period, a total of 18,778 tons of foods (cereals, pulses, salt and oil) were distributed by WFP to refugees in the transit centres of Kavimvira and Mongemonge and in the regrouping sites of Sange and

Lusenda. Additional food (manioc flour, vegetables, sugar and spices) is provided particularly for people with special needs.

RWANDA

- In Mahama camp, WFP is providing plumpy sup (nutritional supplements) to children with moderate acute malnutrition (MAM) while UNICEF distributes plumpy nut (nutritional supplements) to children below the age of 5 with severe acute malnutrition.
- In Bugesera, 155 children below the age of 5 were screened for malnutrition using the middle-upper arm circumference measurement (MUAC) by Africa Humanitarian Action (AHA). Three children were identified with SAM and 14 with MAM. Both SAM and MAM management programmes are implemented by UNHCR's implementing partner, AHA in collaboration with UNICEF and WFP in Bugesera.

UNITED REPUBLIC OF TANZANIA

- Some 951 tons of food have been distributed to 52,000 Burundian refugees since the start of the response. In Nyarugusu, 47,500 refugees received dry rations (composed of corn flour, pulses, fortified super-cereal, flour, oil, and salt) and 5,000 refugees received wet ration (cooked food) last week. Food has also been distributed in the form of wet rations to 300 refugees in Ngara and High Energy Biscuits (HEB) distributed to 100 individuals in Kagunga.
- Due to ongoing registration and other activities in the camp a number of refugees are not yet part of the ongoing General Food Distribution (GFD), but continue to receive food assistance under the wet-feeding programme. Partners are following up to ensure practical timing of interventions and adequate information to address any logistical issues.
- Some 12,000 children below the age of 5 were screened for their nutritional status (using MUAC) reflecting a rate of 0.2% with SAM and 0.4% with MAM.



Water and Sanitation

Achievements and Impact & Identified Needs and Remaining Gaps

DEMOCRATIC REPUBLIC OF THE CONGO

- Potable water at the transit centres in Kavimvira and Mongemonge and in the reception centre of Sange is provided by OXFAM (10,000 litres of water per day on average) and REGIDESO and meets the emergency standard of 15l of water per person per day (l/p/d). In Lusenda, water is provided by the *Agence de Développement Economique et Social* (ADES) with an average daily consumption of 18l/p/d.

RWANDA

- Refugees are now receiving 15.8 l/p/d in Mahama camp. However, finding a durable water source for refugees has been a great challenge in Mahama for all WASH actors (UNHCR, UNICEF and World Vision). UNHCR continues to explore the possibility of treating surface water from Akagera River and a surveying team has been deployed to find alternative sites to dig more effective boreholes.
- In Mahama camp, 1,034 latrines have been constructed (23 refugees per latrine) as well as 639 showers (38 refugees per shower).

UGANDA

- Refugees are currently receiving 8.6 l/p/d in the reception centre, below the emergency standard of 15l/p/d. It has been recommended to start trucking water pending the drilling of boreholes or extension of the water pipeline. The need for latrines is urgent; there are 100 people per latrine when the emergency standard is 50 people per latrine.

UNITED REPUBLIC OF TANZANIA

- Burundian refugees in Nyarugusu have access to some 12l/p/d, below the emergency standard of 15l/p/d.
- WASH partners have constructed 1,504 latrines and 961 showers have been built. An additional 281 latrines and 775 showers still need to be built.

Shelter and NFIs

Achievements and Impact & Identified Needs and Remaining Gaps

DEMOCRATIC REPUBLIC OF THE CONGO

- In Lusenda, in preparation for families being relocated from transit/reception centres, 274 family emergency shelters have been completed and another 189 are being constructed. Sixteen reception centres have been constructed, and 14 latrines blocks finalized.

RWANDA

- An additional 50 hectares of land has been provided by the Government of Rwanda in Mahama (for a total of 100 hectares). UNHCR and partners will begin constructing semi-permanent shelters to eventually move refugee out of tents. The construction of 8 semi-permanent shelters is already in progress to serve as a demonstration for government officials and refugees.

UNITED REPUBLIC OF TANZANIA

- The shelter sector has revised its construction plan to include accommodation for the additional refugee population in Nyarugusu. Over 3,371 family shelters have been completed together with 80 collective shelters accommodating close to 40,000 refugees. An additional 3,000 family shelters are required to address the needs of the remaining population.
- With a view to the preservation of the environment and sustainability of energy, there is need for the distribution of additional solar lamps as well as energy saving stoves to the refugee population.



Burundian families settle in Nyarugusu refugee camp, Tanzania. UNHCR/B. Loyseau

FINANCIAL INFORMATION

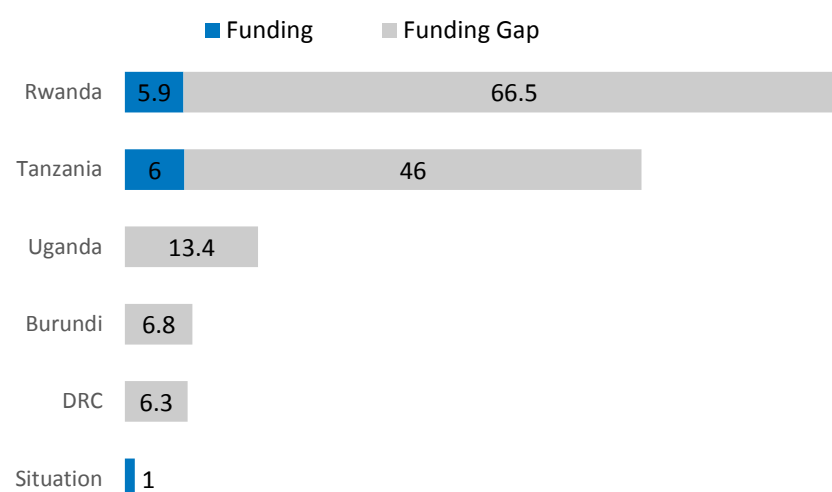
On 28 May, UNHCR released a Supplementary Budget Appeal for the Burundi Situation, which includes needs for Burundi, the DRC, Rwanda, Tanzania and Uganda. UNHCR's total financial requirements for the Burundi Situation currently amount to **USD 151.7 million**, including USD 131.4 million for the response in the DRC, Rwanda and Tanzania from April to September 2015, as presented in the Regional Refugee Response Plan launched on 22 May. UNHCR is very grateful for the financial support provided by donors, particularly those who have contributed to UNHCR activities with unearmarked and broadly earmarked funds, as well as for those who have already contributed to the Burundi situation. **The organization's overall needs for this situation are currently funded at 9%.**

Donor:

CERF, Denmark, United Kingdom

Funding:

A total **USD 13 million** has been funded



Contacts:

Ms. Kabami Kalumiya, Associate Reporting Officer, kalumiya@unhcr.org Tel: +41 (0) 22 739 8252

Ms. Mandy Felicia Owusu, Senior Desk Officer, owusu@unhcr.org Tel: +41 (0) 22 739 8465

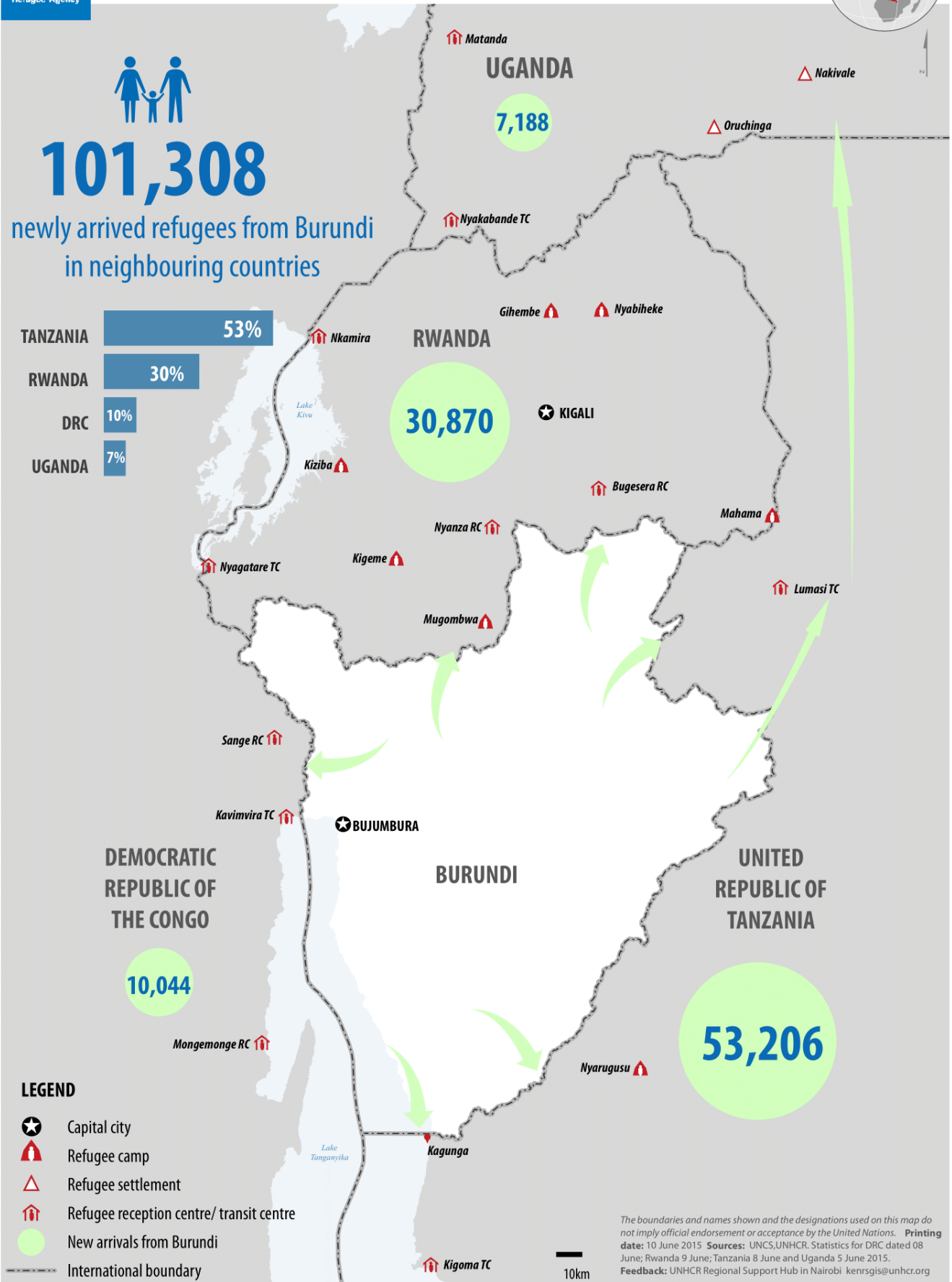
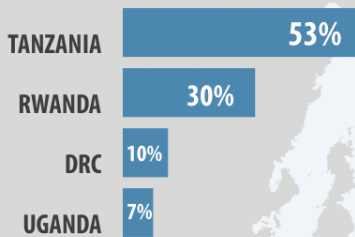


BURUNDI SITUATION: Displacement of Burundians into neighbouring countries | As of 09 June 2015



101,308

newly arrived refugees from Burundi in neighbouring countries



LEGEND

- Capital city
- Refugee camp
- Refugee settlement
- Refugee reception centre/ transit centre
- New arrivals from Burundi
- International boundary

The boundaries and names shown and the designations used on this map do not imply official endorsement or acceptance by the United Nations. **Printing date:** 10 June 2015 **Sources:** UNCS, UNHCR. Statistics for DRC dated 08 June; Rwanda 9 June; Tanzania 8 June and Uganda 5 June 2015. **Feedback:** UNHCR Regional Support Hub in Nairobi kenrgis@unhcr.org